



SALVAGE SOLUTIONS



SALVAGE SOLUTIONS



a Boskalis company



WHO WE ARE



'WE TAILOR INNOVATIVE, SUSTAINABLE SOLUTIONS TO SUIT ANY SITUATION, FROM STRAIGHTFORWARD TO COMPLEX.'

SMIT Salvage is synonymous with total commitment in the challenging field of sustainable marine emergency response and wreck removal. Our vast expertise is built on 170 years of experience.

SMIT Salvage keeps its dedicated and highly trained salvage professionals and specialized equipment in a state of round-the-clock readiness to respond instantly to incidents anywhere in the world. Over the years SMIT Salvage has also effectively realized a wide variety of demanding wreck removal projects.

We have learned to manage complexity, mitigate risks and simplify execution to achieve optimal and reliable solutions. You can trust on the commitment of a wide range of specialists available globally within our parent company Royal Boskalis Westminster, a leading global dredging and marine expert.

Through affiliated brands such as Dockwise, Fairmount, Keppel Smit Towage, SAAM SMIT Towage and Smit Lamnalco we offer additional services like heavy marine transport and towage.

However straightforward or complex your situation – SMIT Salvage can tailor an innovative, sustainable and effective solution to your needs.

SMIT Salvage successfully refloated and redelivered a drilling unit that went adrift and grounded off the coast of Alaska after it had lost its towing line in severe weather.

OUR WORLD

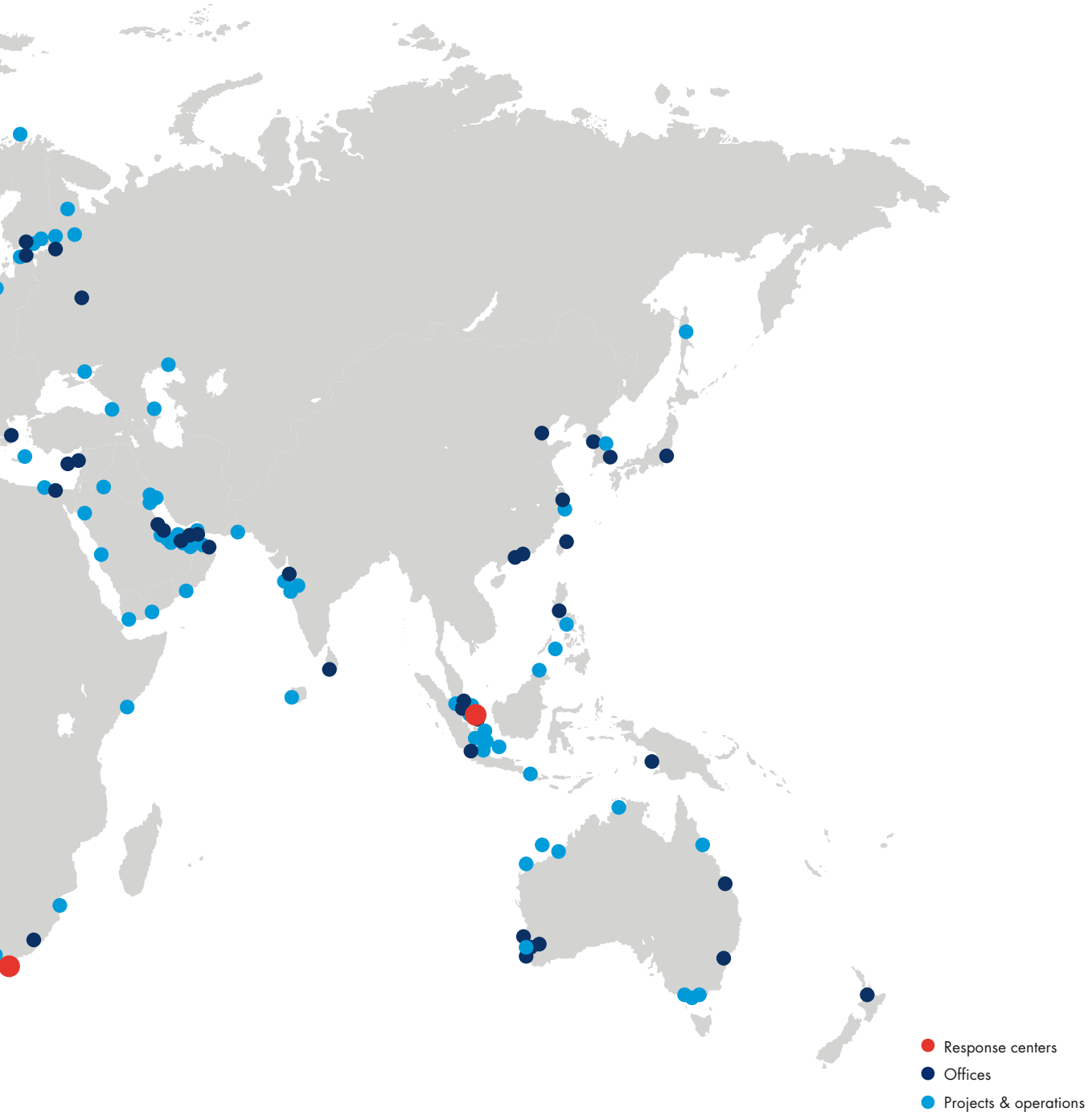
WHO WE ARE

SMIT Salvage response centers, strategically located in Rotterdam, Cape Town, Houston and Singapore, provide a 24-hour link to customers, vessels and specialized equipment. In addition, we can call upon the expertise and resources of the Boskalis global network. Our worldwide presence guarantees an immediate response and rapid service.

Our clients are:

- Ship owners
- Ship managers/operators
- Hull and machinery underwriters
- Protection & Indemnity clubs
- Oil and gas companies
- Governmental and local authorities
- Cargo owners and underwriters

SALVAGE SOLUTIONS



OUR SOLUTIONS



EMERGENCY RESPONSE



WRECK REMOVAL

SAFE AND SUSTAINABLE

| SAFE AND SUSTAINABLE



| SALVAGE SOLUTIONS

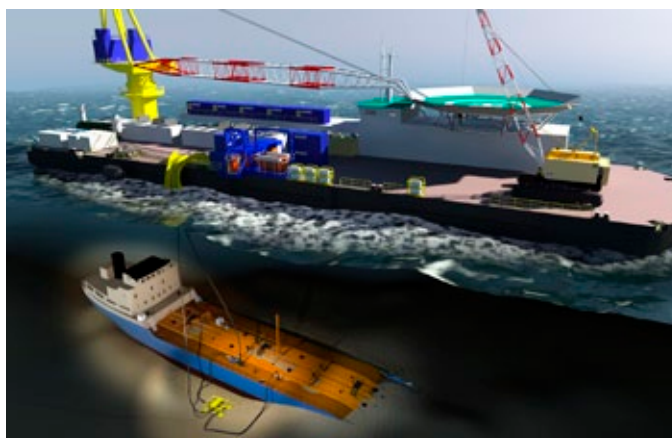
This bulk carrier was severely damaged when it grounded on the rocks off the Norwegian coast during a storm. SMIT Salvage's first priority was to battle the pollution, recovering all the remaining heavy fuel oils and other pollutants out of the holds and tanks by means of skimming and pumping. The recovered pollutants were transported to shore and disposed of.

'OUR ENVIRONMENTAL EXPERTISE AND INNOVATIVE TECHNIQUES ENSURE YOUR FULL COMPLIANCE WITH REGULATIONS'

SMIT Salvage takes a leading role in the development of innovative and effective techniques that enable the safe and sustainable recovery of pollutants from marine casualties.

Our clients benefit from our vast experience in preparing environmental impact assessments and environmental management plans. Our state-of-the-art monitoring systems and environmentally friendly techniques, working methods and equipment will ensure that you comply fully with regulations.

Our in-house experts in fields as marine biology, ecology and engineering provide you with all the relevant expertise.



Above
Using a saturation dive spread and team, hot-tap equipment (for pumping fuel from the submerged tanks) and a state-of-the-art tank heating system, SMIT Salvage recovered about 600 tonnes of HFO from a wreck located in a waterdepth approaching 100 meters, removing the environmental threat the vessel posed.

EMERGENCY RESPONSE

EMERGENCY RESPONSE



SALVAGE SOLUTIONS





'WE GUARANTEE 24/7 RESPONSE, NO MATTER HOW REMOTE THE LOCATION'

When you are confronted with an emergency, a prompt and effective response makes all the difference. SMIT Salvage's professional and experienced salvage teams and specialized equipment are at the ready to provide instant response to your emergency, anywhere in the world, no matter how remote the location.

You can also count on our range of OPA '90 emergency response services. Our marine salvage, lightering and fire-fighting services ensure compliance with regulations for all vessels trading in the U.S.

Operating out of four strategically located response centers in Rotterdam, Cape Town, Houston and Singapore and supported by our extensive global network, we guarantee 24/7 response worldwide.

We also provide tailor-made training programs and drills to ensure that if there is a shipboard emergency, you and your organization are equipped and prepared to handle the situation until professional salvage assistance arrives.

An extensive fire-fighting operation in the Atlantic Ocean, about 700 NM from nearest land. SMIT Salvage immediately mobilized a team and equipment to rescue the vessel. The team contained the fire and towed the casualty to a safe refuge.



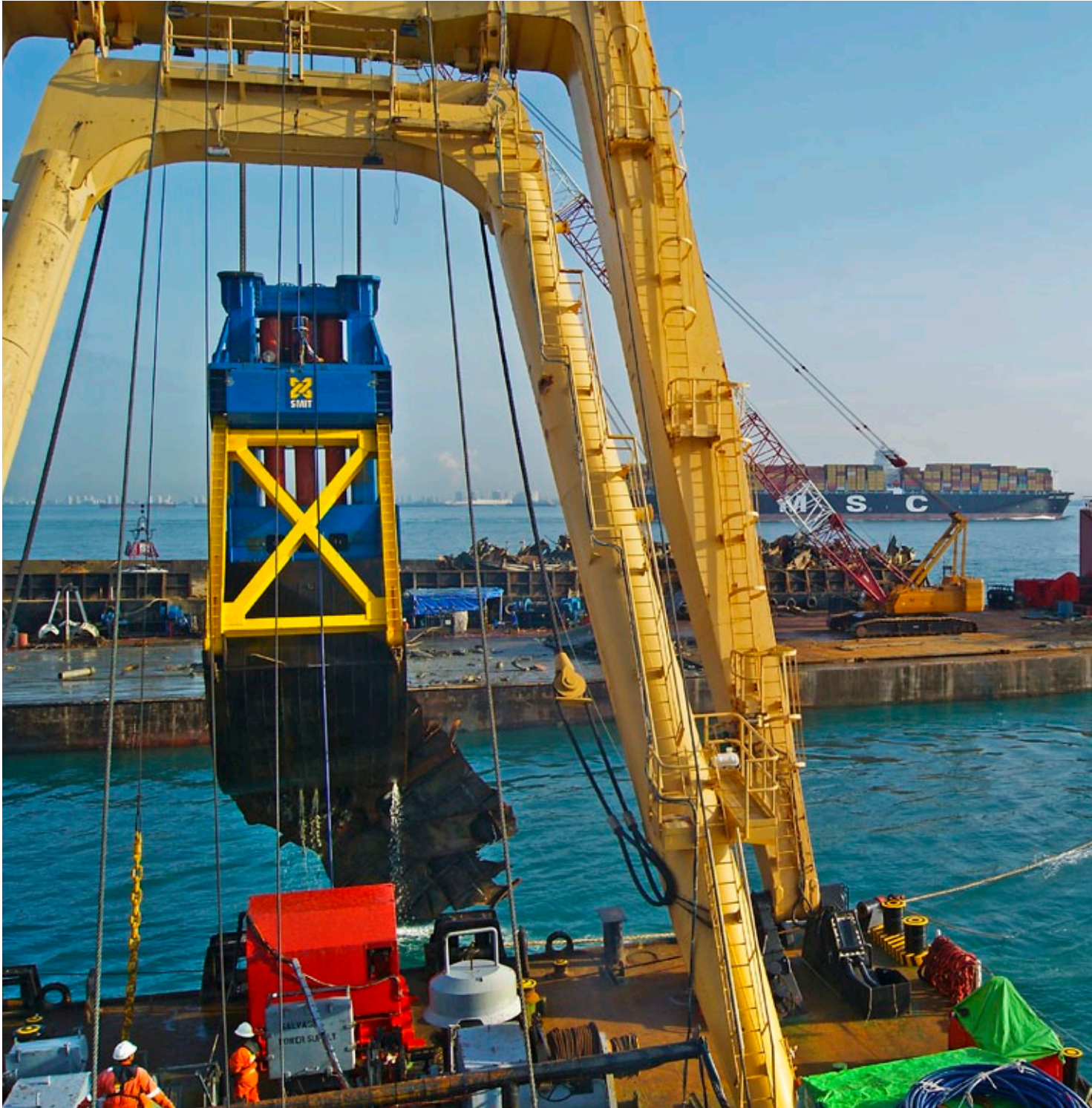
left
Hurricane Rita caused this tension-leg platform to capsize in the Gulf of Mexico. SMIT Salvage recovered the platform and secured it for redelivery to its owners.

middle
SMIT Salvage is responsible for many successful refloating operations, saving the vessels and its cargoes.

right
Our salvage experts returning from an initial assessment of a casualty.

WRECK REMOVAL

WRECK REMOVAL



SALVAGE SOLUTIONS

'OUR IN-HOUSE SPECIALISTS DELIVER TURNKEY SOLUTIONS TO FIT ALL YOUR REQUIREMENTS'

Removal of a sunken car carrier in Indonesia. The wreck, positioned upside down, was cut in sections and lifted on to barges for disposal.



Our track record includes solutions for many complex and challenging wreck removal operations.

SMIT Salvage has the option of calling upon the expertise and resources of the entire Boskalis group. This, combined with our unmatched ability to manage complexity, means that you can rely on us for a turnkey solution that will fit all of your requirements, from feasibility studies and environmental impact surveys to execution and operational services.

We commit to delivering the best possible result that is both cost-effective and sustainable.

SMIT Salvage is constantly exploring new methods for wreck removal, pollutant and cargo recovery and technologies for advanced deep-water recovery work, in order to mitigate environmental threats wherever possible.

Crane barge Smit Borneo removing containers from a grounded vessel.



A TEAM BUILT AROUND YOUR NEEDS



'SMIT SALVAGE HAS THE RESOURCES TO BUILD A GLOBAL TEAM AROUND THE CHALLENGES YOU FACE'

SMIT Salvage effectively removed a naval vessel that had grounded on a reef off the Philippines. The team extracted all oil and safely removed the vessel in three sections.



In addition to our skilled salvage professionals, you can also rely on in-house experts from a wide range of disciplines to form a specialist team around your needs. These disciplines include (marine & civil) engineering, naval architecture, geology, marine biology, explosive ordnance disposal (EOD), heavy lifting and transport.

Thanks to our towage joint ventures we have prominent presence on all continents, in more than 90 ports in 35 countries. The combined fleet of the group consist of 1,000 vessels and floating equipment. Specialized salvage equipment, such as fire-fighting, diving, pumping and monitoring, is positioned strategically around the globe for immediate dispatch.

Our specialized equipment is available for immediate dispatch and worldwide deployment.



LET'S TALK

| LET'S TALK



'TELL US
ABOUT YOUR
CHALLENGES'

| SALVAGE SOLUTIONS

For over 170 years, SMIT Salvage has helped clients solve some of the toughest challenges.

How can we help you? Let's meet, tell us about your challenges.

Contact us 24/7
T + 31 10 4549911





CONTACT US **24/7**

T +31 10 4549911

E salvage@smit.com

THE NETHERLANDS / ROTTERDAM

T +31 10 4549911

SINGAPORE / SINGAPORE

T +65 666 84222

SOUTH AFRICA / CAPE TOWN

T +27 215 075777

U.S.A. / HOUSTON

T +1 281 372 35 00

For our other office locations, please visit
www.smit.com/contact