



General

Call sign	PCIW
Classification	ABS A1(E) AMS
Port of Registry	Rotterdam

Dimensions

Length	91.35 m
Beam	43.35 m
Depth	8.50 m
Draught min.	2.75 m
Draught max.	7.25 m
Sailing height min.	56.00 m
Gross tonnage	10.560 R.T.
Nett tonnage	3.168 R.T.

Accommodation

24 persons
(Can be increased)

Propulsion

4 x 813 kW Azimuth

Deck Load

15 t/m²

Mooring winches

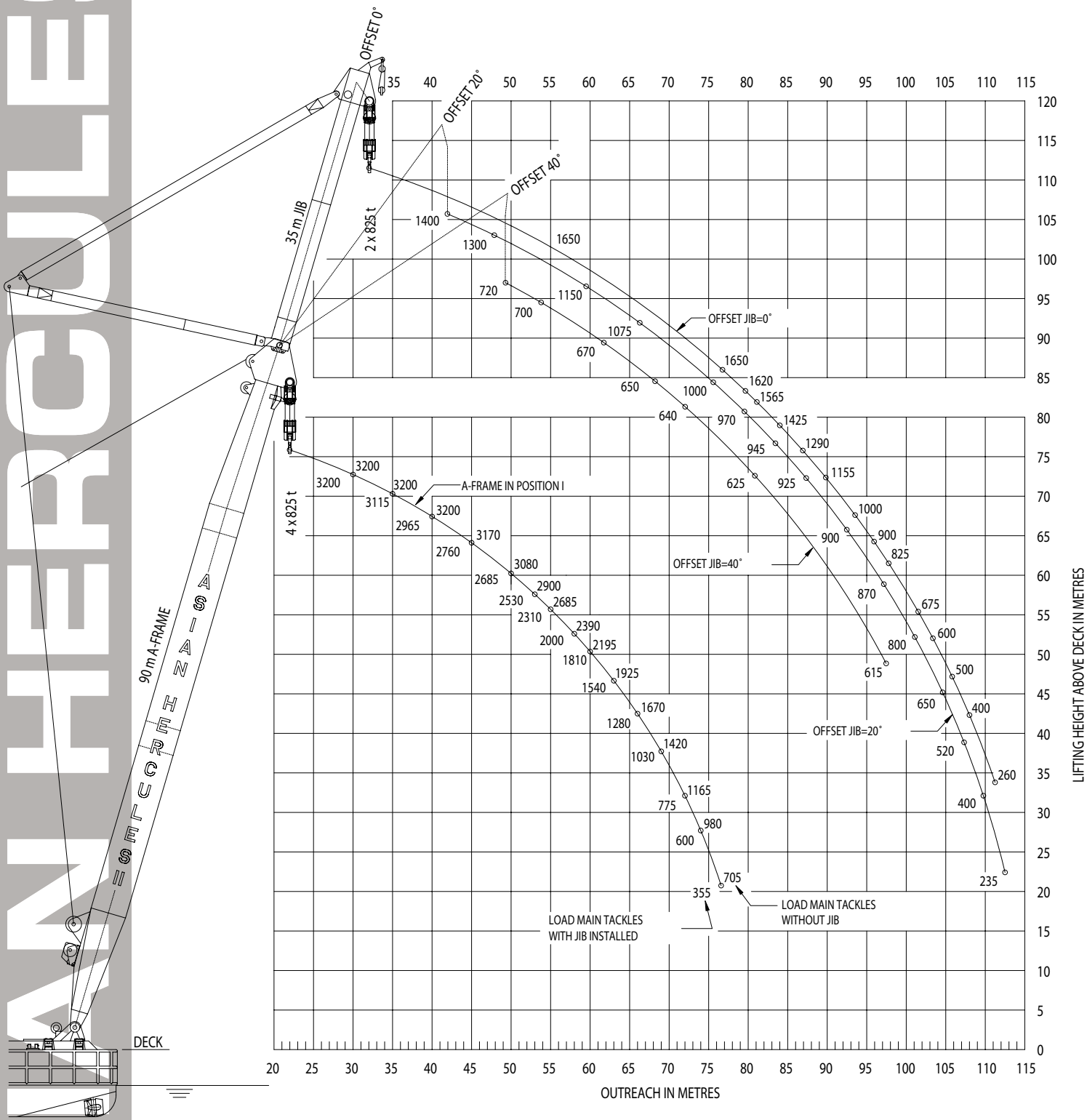
8 point mooring
30 t. Cap. 1000 m of
44 mm diam. wire rope

SMIT Heavy Lift Europe

P.O. Box 1042
3000 BA Rotterdam
The Netherlands

Tel +31 10 454 99 11
Fax +31 10 414 32 38
heavylift.europe@smit.com
www.smit.com

All loads are in metric ton [t] and for inland waters.
 All load capacities are without traverses.
 The following load capacities are on request;
 ▶ A-frame in position II and III
 ▶ Combined lifting with both main- and jib tackles
 ▶ Offshore



CAPACITY DIAGRAM ASIAN HERCULES II

DATE: June 2000

All details are believed to be correct but not guaranteed.