



## General

Germanischer Lloyd  $\approx$ 100 A5 M E1 tug +  $\approx$ MC E AUT  
 IMO number 'Fairplay 21' 9148752  
 IMO number 'Fairplay 24' 9153616

## Dimensions

Length over all 35.55 m  
 Beam over all 10.80 m  
 Draught 4.60 m  
 Gross tonnage 496 tonnes

## Engines and propulsion

Main engines 2 x Deutz SBA 8 M 628  
 Total power 3312 kW  
 Propulsion 2 x Schottel SRP 1212 ASD  
 Generators 2 x MAN D2866 E

## Performance

Bollard pull ahead 55 tonnes  
 Bollard pull astern 50 tonnes  
 Speed ahead 13.5 knots  
 Speed astern 13.5 knots

## Deck equipment

Anchor towing winch Ulstein Braatvag,  
 SL50 1 T brake load 125 tonnes  
 Towing winch Ulstein Braatvag,  
 SL50 1 T brake load 125 tonnes  
 Towing hook Seebeck 55 tonnes

## Tank arrangement

Fuel oil 220 m<sup>3</sup>  
 Fresh water 50 m<sup>3</sup>

## SMIT Harbour Towing Rotterdam

P.O. Box 59052  
 3008 PB Rotterdam  
 The Netherlands

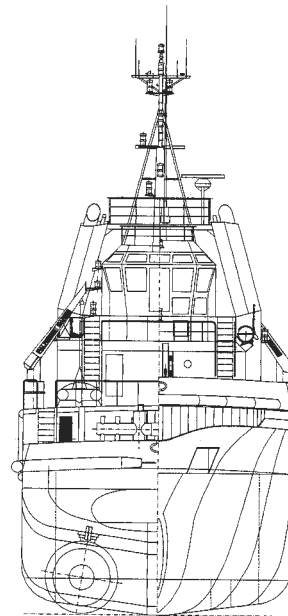
Phone +31 10 4549911  
 Fax +31 10 4549766  
 harbourtowage.sales.rtm@smit.com  
 www.smit.com

## Nautical and communication equipment

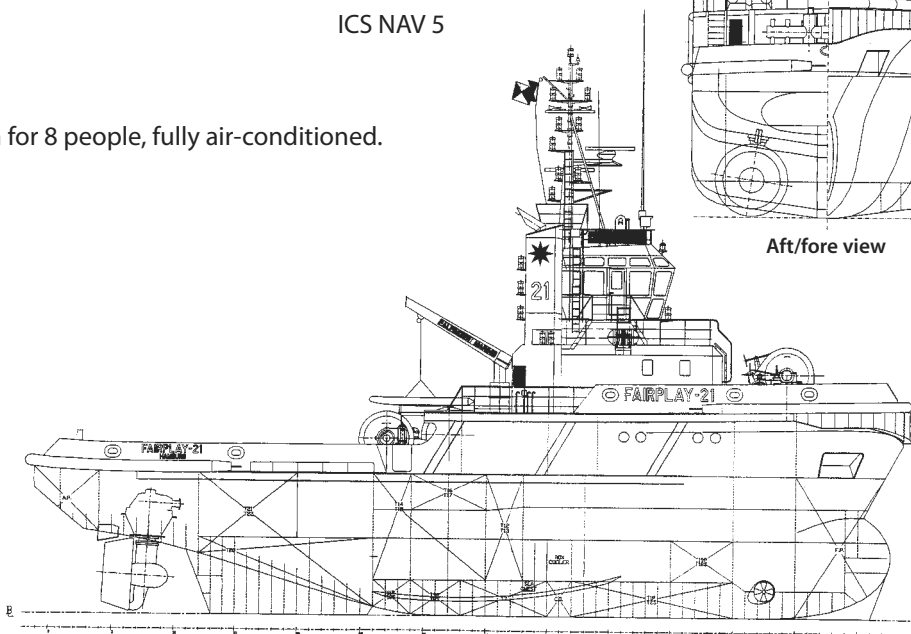
Radar	Decca CA25
Compass	Navigat
Magnetic compass	Jupiter
Autopilot	Sperry AP1500
GPS	Koden KGP912
Echosounder	ELAC LA2 5000
VHF	Skanti 3000
VHF portable	Skanti 9110
Navtex	ICS NAV 5

## Accommodation

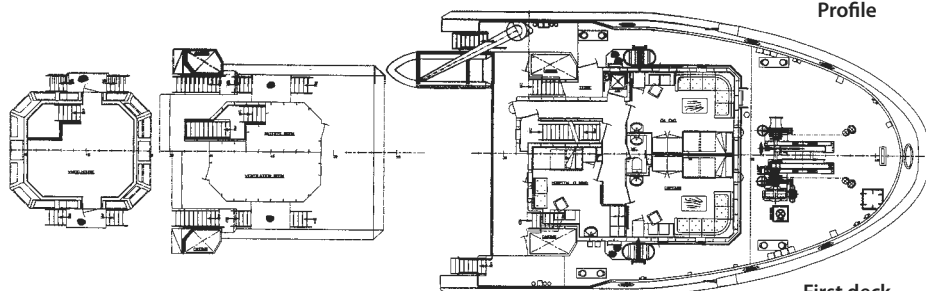
Accommodation for 8 people, fully air-conditioned.



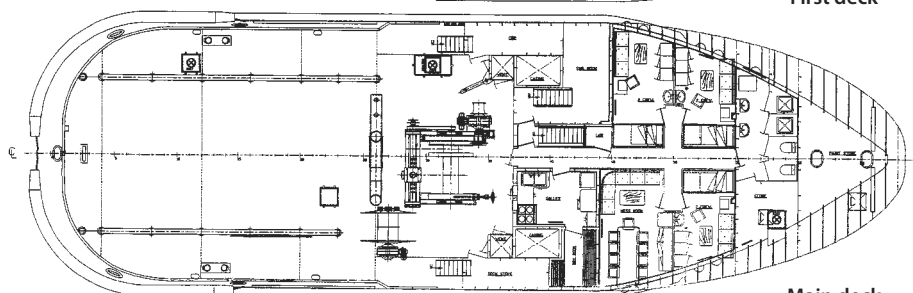
Aft/fore view



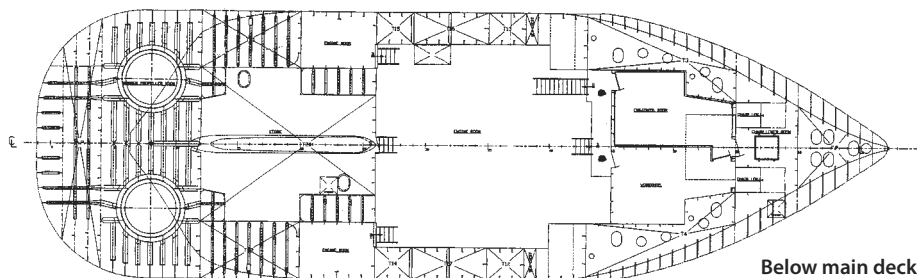
Profile



First deck



Main deck



Below main deck

## GENERAL PLAN FAIRPLAY 21

All details are believed to be correct but not guaranteed.