



HARBOUR TOWAGE SMIT RUSLAND

Specifications also applicable for the 'Smit Finland', 'Smit Ierland' and 'Smit Zweden'

Stern Drive variable pitch propeller
28 tonnes bollard pull harbour tug



General

Bureau Veritas I-HULL-MACH tug coastal area

IMO number 'Smit Rusland' 7800497

IMO number 'Smit Finland' 7800473

IMO number 'Smit Ierland' 7800502

IMO number 'Smit Zweden' 7800461

Dimensions

Length over all 28.42 m

Beam over all 8.80 m

Draught 3.34 m

Gross tonnage 196 tonnes

Engines and propulsion

Main engines 2 x 6FHD240 SWD

Total power 1340 kW

Propulsion 2 x Promac variable pitch propellers

Generators 2 x Volvo Penta

Performance

Bollard pull ahead 28 tonnes

Speed ahead 12 knots

Deck equipment

Towing winch Van der Giesen, IHC DMN,
maximum pull 163 kN on third layer

Tank arrangement

Fuel oil 89 m³

Fresh water 14 m³

SMIT Harbour Towing Rotterdam

P.O. Box 59052
3008 PB Rotterdam
The Netherlands

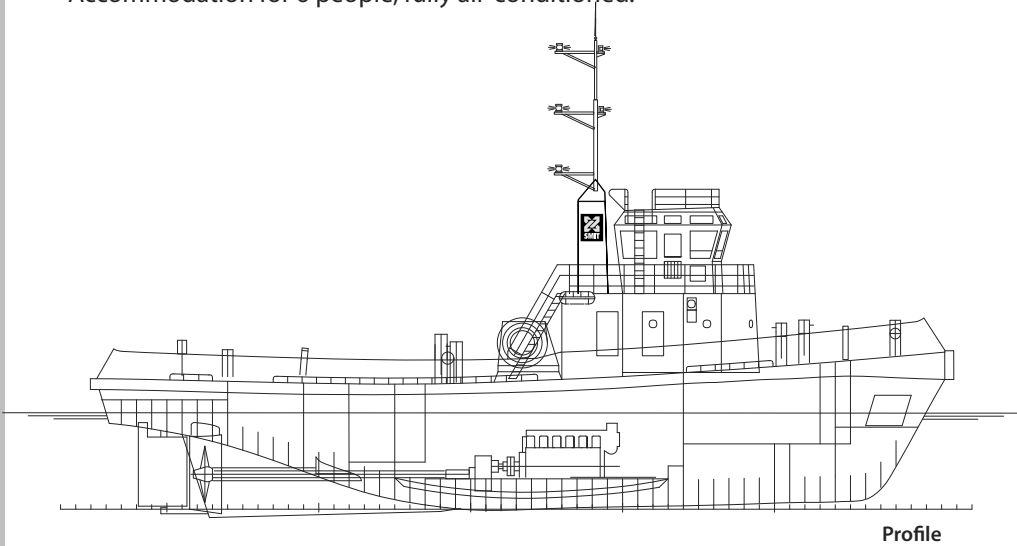
Phone +31 10 4549911
Fax +31 10 4549766
harbourtowing.sales.rtm@smit.com
www.smit.com

Nautical and communication equipment

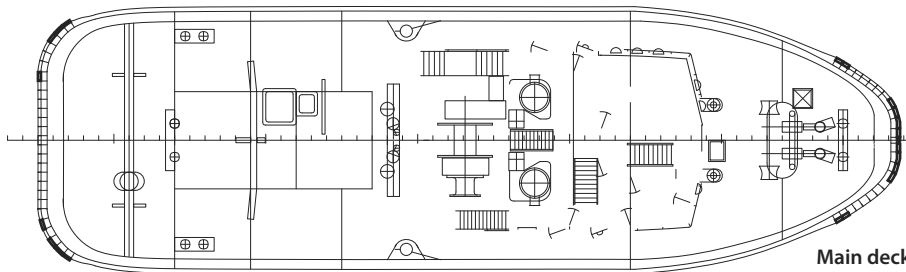
Radar	Furuno RHRS 2001 R
Compass	Observator
GPS	MLR Valsat 02L
Echosounder	Simrad
VHF	Sailor RT 2048
VHF portable	Nova Marine RT 16
Navtex	JRC NCR 300A

Accommodation

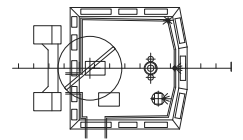
Accommodation for 6 people, fully air-conditioned.



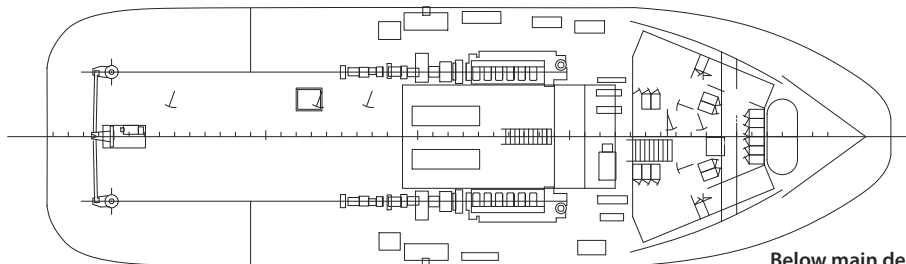
Profile



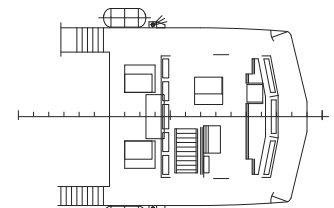
Main deck



Top deck



Below main deck



Bridge deck

GENERAL PLAN SMIT RUSLAND

All details are believed to be correct but not guaranteed.