



General

Bureau Veritas I-HULL-MACH-AUT-UMS tug coastal area
 IMO number 'Thamesbank' 9060704
 IMO number 'Texelbank' 9060699

Dimensions

Length over all 30.51 m
 Beam over all 9.70 m
 Depth 5.14 m
 Gross tonnage 321 tonnes

Engines and propulsion

Main engines 2 x Deutz SBV 6M628
 Total power 2450 kW
 Propulsion 2 x Aquamaster US140/1/2700 Tractor
 Generator 2 x Deutz TD 226-6

Performance

Bollard pull ahead 45 tonnes
 Speed ahead 12 knots
 Speed astern 12 knots

Deck equipment

Towing winch Kraayeveld, hydraulic, 150 tonnes
 Towing hook Mampaey 65 SWL

Tank arrangement

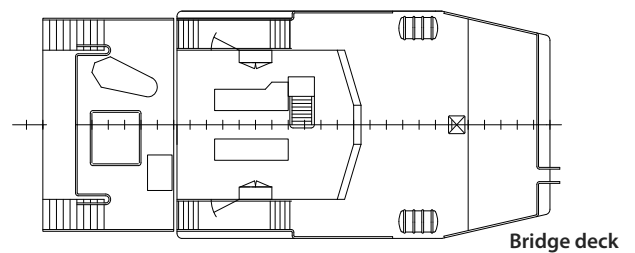
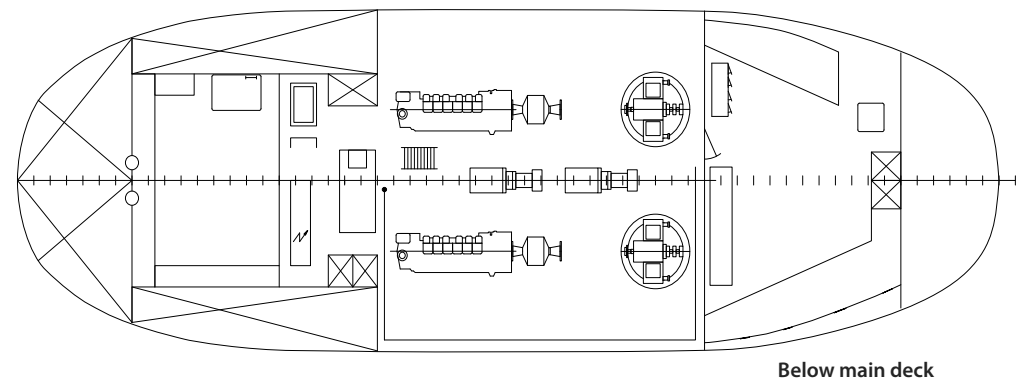
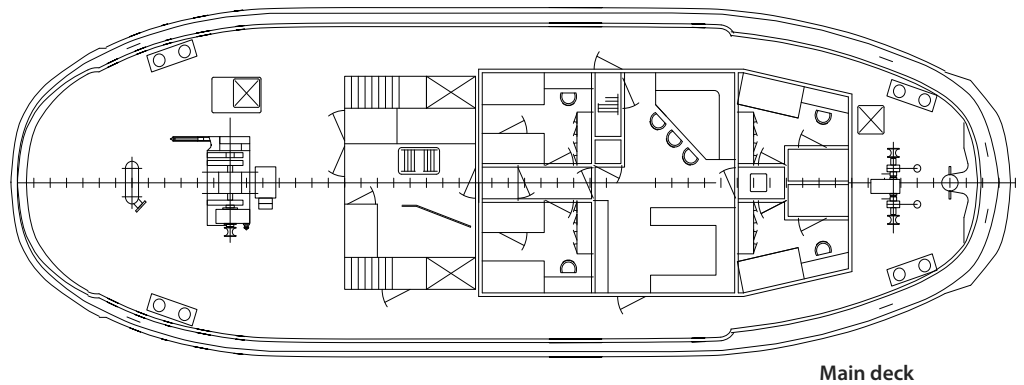
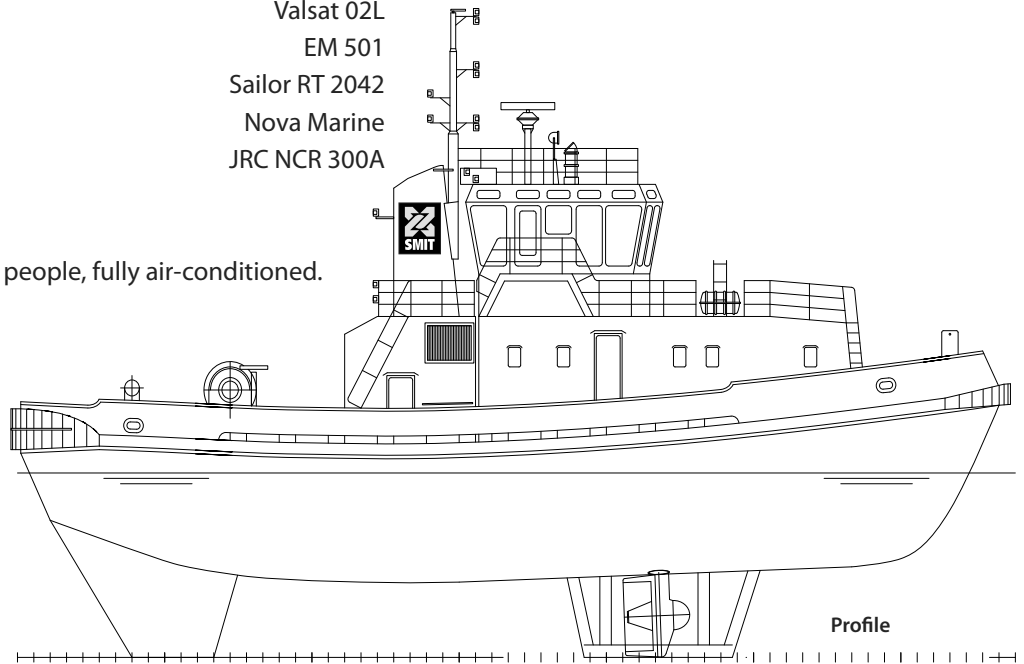
Fuel oil 74 m³
 Fresh water 24 m³

Nautical and communication equipment

Radar	Furuno FR 1505 MKIII
Compass	Observator MK 3
Autopilot	Navitron
GPS	Valsat 02L
Echosounder	EM 501
VHF	Sailor RT 2042
VHF portable	Nova Marine
Navtex	JRC NCR 300A

Accommodation

Accommodation for 4 people, fully air-conditioned.



GENERAL PLAN THAMESBANK

All details are believed to be correct but not guaranteed.