



General

Lloyds Register of Shipping Class \approx 100A1 semi-submersible ocean-going transportation barge.

Dimensions

Length extreme	140.00 m
Breadth extreme	36.04 m
Depth extreme	8.54 m
Summer draft extreme	6.68 m
Light draft	1.39 m
Length moulded	139.97 m
Breadth moulded	36.00 m
Depth moulded	8.50 m
Deck area	120 x 36 m = 4320 m ²
Deadweight summer draft	24000 tonnes
Lightweight	5408 tonnes
Deck load maximum	15 tonnes/m ²

Anchor winch

The winch is equipped with 2 wire drums. Capacity of each drum 350 m of 48 mm anchor wire and 1 warping head. Brake holding 100 tonnes. Each wire drum has a brake and a clutch which is hydraulically operated. A spooling device is provided.

Capacity high range	15 tonnes - 13 m/min
	10 tonnes - 20 m/min
	3.5 tonnes - 36 m/min
Capacity low range	30 tonnes - 6.5 m/min
	20 tonnes - 10 m/min
	11 tonnes - 18 m/min

Anchor equipment

Two stockless type anchors complete with 4 m of chain and shackle, each weighing 5259 kg, built by Baldt. Both stowed in anchor recess forward and attached to 350 m of 48 mm anchor wire stowed on winch drum.

Main towing bridle

Two 23 m x 70 mm U3 stud chain link, 1 delta plate.

Emergency towing bridle

Two 23 m x 70 mm U3 stud chain link, 1 shackle.

Recovery equipment

One 50 m x 28 mm recovery wire attached to shackle of main towing bridle.

Watertight manholes

Manholes on main deck have a clear opening of 500 mm diameter and are flush fitting. Each tank fitted with sounding cap in way of manhole.

Mast and navigation light posts

Signal mast mounted on top of control room.
Navigation lights fitted SB, PS and stern.

Main generator

Engine: Detroit Diesel, type 4-71, 4 cylinders, water-cooled diesel engine, rated at 130 bhp when running at 1800 rpm.

Alternator: Denyosha, Marine, drip-proof with rated output of 95 kW at 0.8 power factor, 450 V, 3 phase, 60 cycles per second when running at 1800 rpm.

Emergency generator

Engine: Lister Diesel, type TR3A08, 3 cylinders, water-cooled diesel engine, rated at 18 bhp when running at 1800 rpm.

Alternator: ECO 28-1L, Marine, drip-proof with rated output of 24 kVA, 220 V, 3 phase, 60 cycles per second when running at 1800 rpm.

Air compressors for deballasting

Engine: Volvo Penta, type D.70.BK, 6 cylinders, water-cooled diesel engine, rated at 92 bhp when running at 1800 rpm. In total 3 engines installed.

Compressor: rotary type compressor, built by Gutehoffnungshütte, connected to each engine.

Capacity: 1000 m³/FAD, maximum back pressure 3.5 bar. Each tank is separately connected to the air system mainlines. All ballast- and air valves remotely controlled from control room.

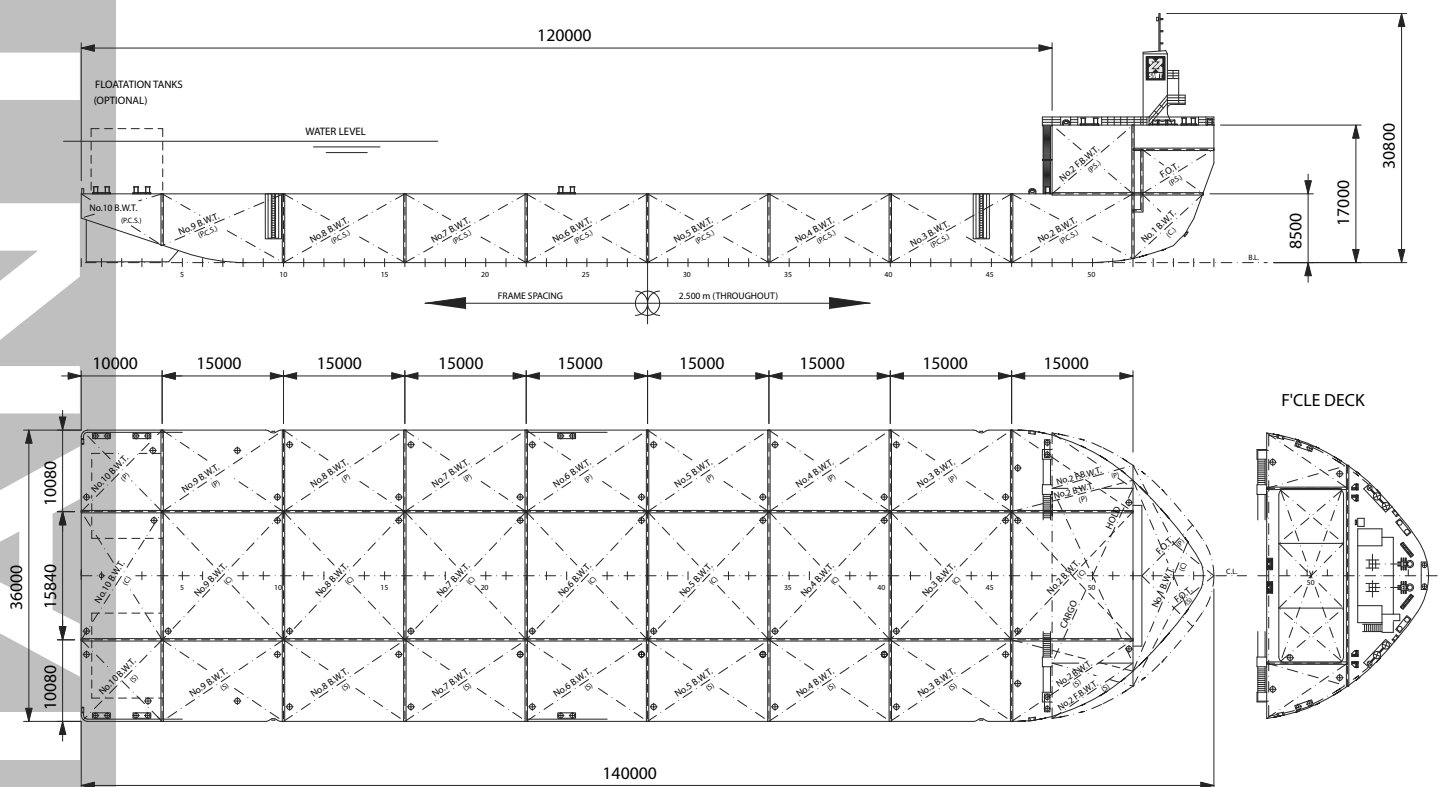
Pumps

Hydraulic pumps: 1 pump unit assembly installed, comprising of 2 electric motors and 2 hydraulic pumps for operating anchor winch.

Hydraulic unit: 1 hydraulic power unit installed for operating bottom- and air valves.

Draft gauge system: 1 Meij Air compressor installed for operating air purge type draught gauges, built by Nakakita, which are located in the control room.

Fuel oil transfer pump: 1 electrically driven horizontal screw type fuel oil transfer pump, capacity 43 m³/h.



GIANT 4 1:650

GENERAL PLAN GIANT 4

All details are believed to be correct but not guaranteed.