



General

Call sign	PHWN
Classification	GL ⚓ 100 A5 MC
Port of Registry	Rotterdam

Dimensions

Length	72.56 m
Beam	30.50 m
Depth	5.50 m
Draught min.	2.50 m
Draught max.	4.90 m
Sailing height min.	49.00 m
Gross tonnage	3343 R.T.
Nett tonnage	1003 R.T.

Accommodation

36 persons
(Can be increased)

Propulsion

3 x 460 kW

Bowthruster

2 x 368 kW

Anchor winches

Aft 1 x 10 t. Cap. 235 m of
56 mm diam. chain

Mooring winches

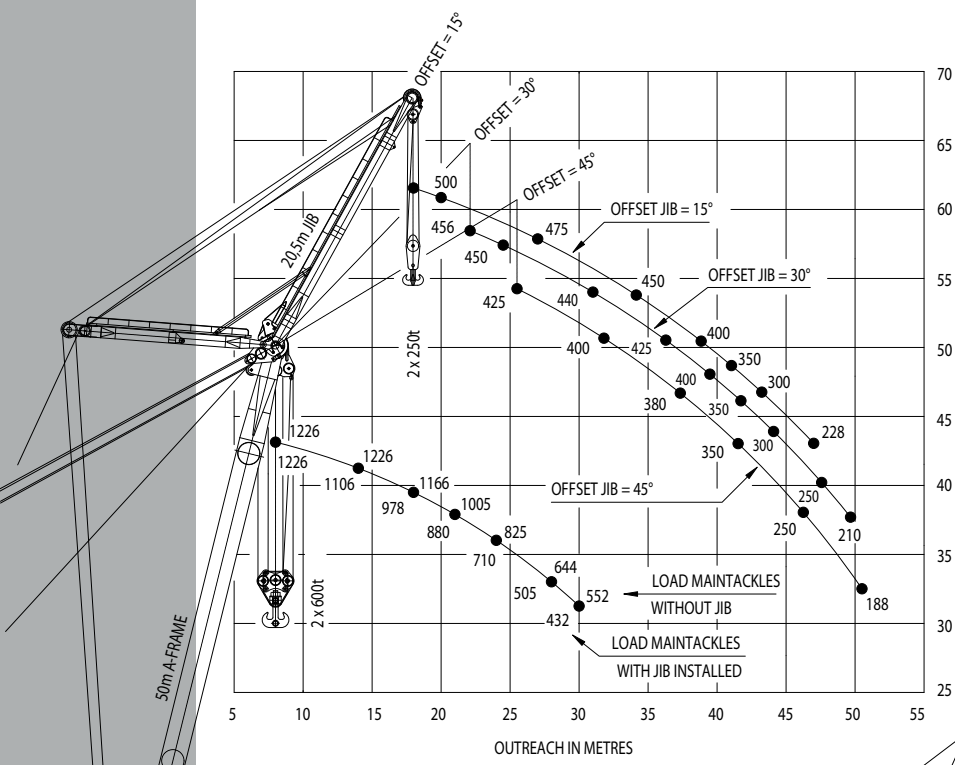
Aft 2 x 10/5 t. Cap. 220 m of
28 mm diam. wire rope
2 x 30/10 t. Cap. 1000 m of
50 mm diam. wire rope
Forward 4 x 10/5 t. Cap. 220 m of
28 mm diam. wire rope
2 x 30/10 t. Cap. 1000 m of
50 mm diam. wire rope

SMIT Heavy Lift Europe

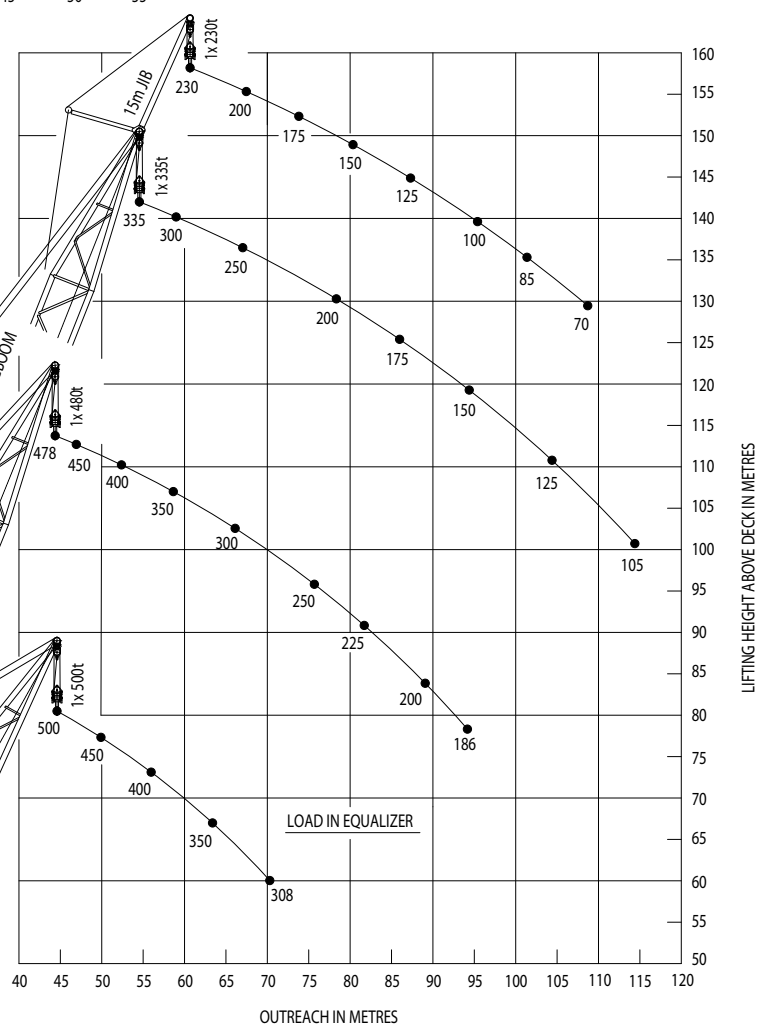
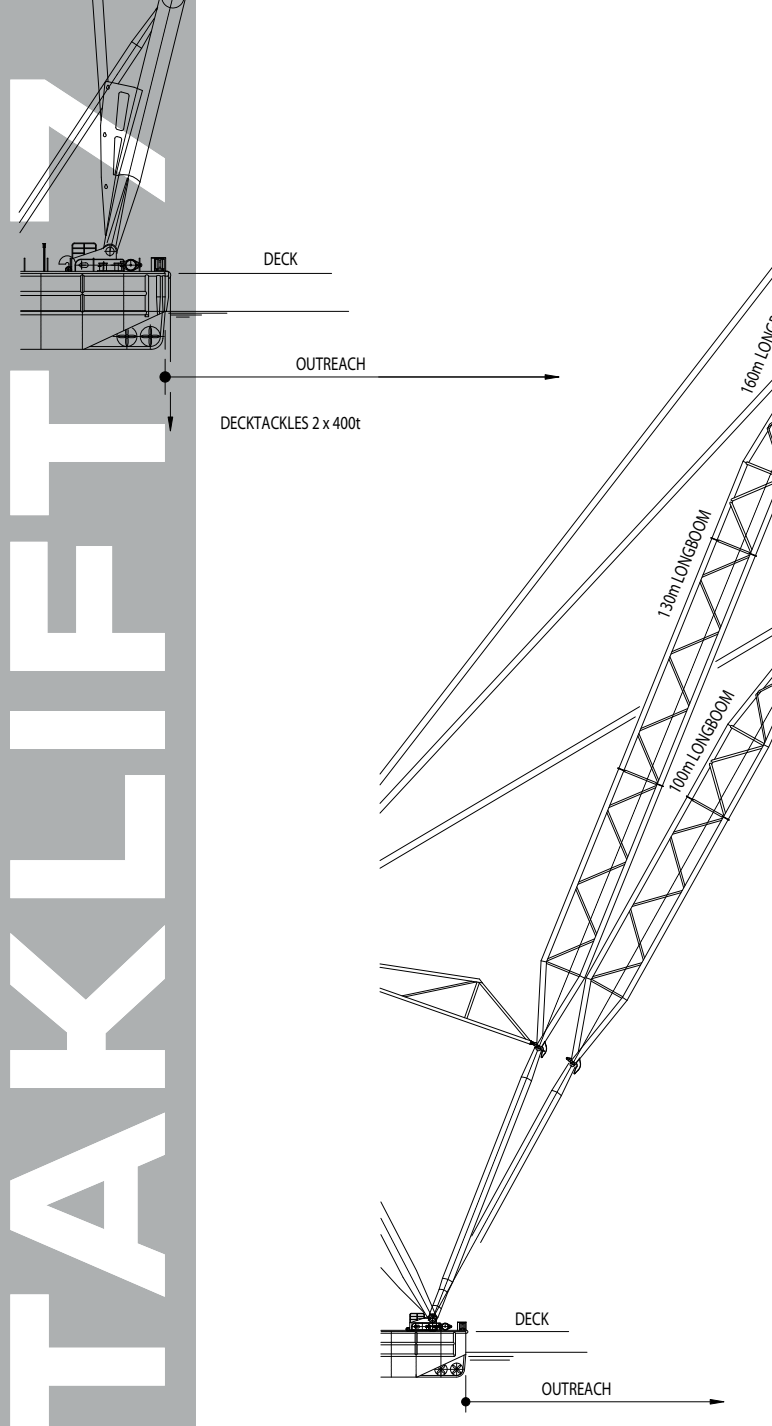
P.O. Box 1042
3000 BA Rotterdam
The Netherlands

Tel + 31 10 454 99 11
Fax + 31 10 414 32 38
heavylift.europe@smit.com
www.smit.com

TAKLIFT



- Notes :
- ▶ Both main tackles and jib tackles can operate together, load capacity on request.
 - ▶ Using deck tackles and main tackles together, loads upto 1600 t can be raised to water level.
 - ▶ Loads in metric ton [t].



Note : Longboom tackles and jib tackles can not be used together.

CAPACITY DIAGRAM TAKLIFT 7

All details are believed to be correct but not guaranteed.